

ReproCELL ISSCR Training Course

Feeder-free and suspension culture of human iPS cells

June 14th and 15th, 2012, Yokohama, Japan

ReproCELL, a world leading stem cell company located in Yokohama, hosts a series of iPS cell culture training courses around the period of ISSCR2012. ReproCELL lab is just 30 minutes away from the conference venue so this is the best opportunity to see, experience and discuss ReproCELL's iPSC technologies with its scientists.

In the courses, ReproCELL's new feeder-free culture medium ReproFF2 is featured.

ReproFF2 requires the medium change only three times a week (we suggest Monday, Wednesday and Friday), giving you an option to stay away from the lab during the weekends.

The participants can choose the courses from below:

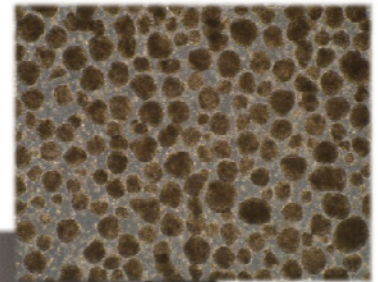
1. For the beginners: Adherent culture of human iPS cells

- ◇ Feeder-dependent and feeder-free culture
- ◇ Passaging, cryopreservation and thawing
- ◇ Transition from feeder-dependent to feeder-free culture



2. For the experienced participants: Suspension culture of human iPS cells

- ◇ Suspension culture of human iPS cells
- ◇ Passaging
- ◇ Transition from adherent culture to suspension culture



Please contact ReproCELL for the details of each course.

Reservation will be accepted in a first-come first-served basis.

ReproCELL Inc.

<http://www.reprocell.com/en/>
info_en@reprocell.com

KDX Shin-yokohama 381 Bldg. 9F
3-8-11 Shin-yokohama, Kohoku-ku
Yokohama 222-0033
Kanagawa, Japan
Tel +81 45-475-3887
Fax +81 45-474-1006



Training Schedule:

Thursday, June 14, 2PM-4PM	1. Adherent and suspension cell culture using ReproFF2
Friday, June 15, 2PM-4PM	2. On feeder and feeder-free culture

Participants will see the demonstration of culturing cells using ReproCELL products. Participants will not actually perform any operation.

Location:

ReproCELL headquarters
KDX Shin-yokohama 381 Bldg. 9F
3-8-11 Shin-yokohama, Kohoku-ku
Yokohama 222-0033
Kanagawa, Japan

Accessing ReproCELL headquarters by train:
Two blocks from Shin-Yokohama station.



Accessing from ISSCR2012 on May 14 and May 15:

Meet at ReproCELL booth in ISSCR at 12:50PM

Participants will be assisted to share taxis to ReproCELL headquarters.

Estimated cost for taxi: 3,000-4,000 Japanese yen (40-50USD) per taxi.

If you want to take this option, we recommend registering at ReproCELL booth in ISSCR2012 beforehand so that we do not miss you.